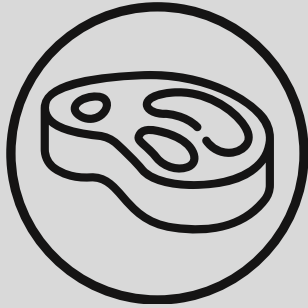


GAME MEAT PROCESSING

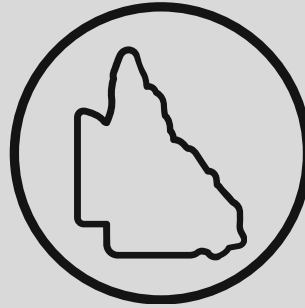


OUR PETFOOD RAW MATERIAL SHOWCASE



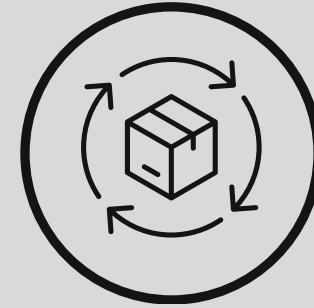
PROCESSING EXPERTISE & SCALE

Processing Expertise & Scale:
Australia's largest wild game
meat processors of kangaroo,
deer and boar



STRATEGIC LOCATION

Strategically located in
southeastern Queensland is to
ensure efficient distribution



CONSISTENT SUPPLY CHAIN

Robust field infrastructure
guarantees a reliable
supply

WHY PARTNER WITH GAME MEAT PROCESSING?



QUALITY ASSURANCE

Australian Government
monitored "Paddock to plate"
quality program, ensuring the
highest standards



HARVESTING PRACTICES

World-best practices in animal
welfare, with government
monitoring and quotas to
ensure sustainability and
conservation



GLOBAL COMPLIANCE & CERTIFICATIONS

BRC certified to meet the
stringent quality standards
required to supply markets in
the European Union, North
America and Asia

KANGAROO PET FOOD RAW MATERIALS

FROM OUTBACK TO MANUFACTURING LINE



Aussie Game Meats offers a premium range of bulk kangaroo products, perfect for pet food manufacturers, distributors, and businesses seeking a high-quality, reliable, and consistent supply of raw ingredients. Our products are processed to the highest standards, ensuring your end product is of exceptional quality.

KANGAROO MDM

Mechanically Deboned Meat of Kangaroo

Weight: 25kg variable
Size: 500mmx 500mm x 120mm
Type: Frozen Nude Block
Palletization: 4 layers x 9 high
Shelf-Life: 24 months from production date
Category: Category 3 material for Petfood manufacture

Colour: Dark Reddish Brown

Texture: Coarse ground meaty texture

Odour: Meaty Smell. Free from off odours

Intended use:

- Fresh petfood
- Canned petfood
- Dry petfood

Nutritional profile:

Protein: 20-22%

Fat: 1-3%

Ash: 1-3%

Moisture: 72-75%



KANGAROO PET MEAT

Meat and residue meats remaining after the preparation of carcass portions

Weight: 25kg variable
Size: 500mmx 500mm x 120mm
Type: Frozen Nude Block
Palletization: 4 layers x 9 high
Shelf-Life: 24 months from production date
Category: Category 3 material for Petfood manufacture

Colour: Dark Reddish Brown

Texture: Coarse ground meaty texture

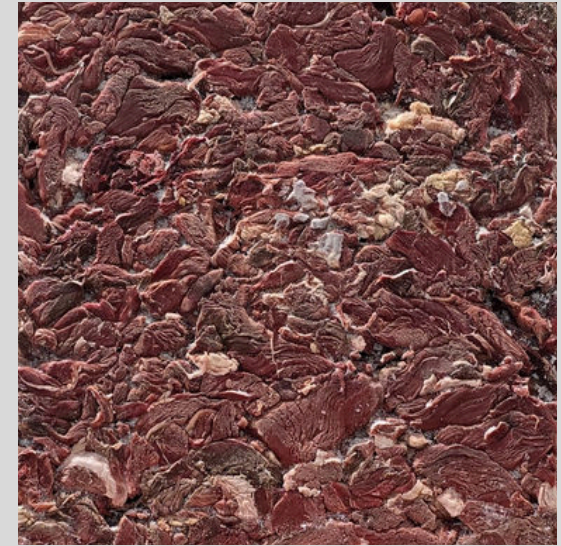
Odour: Meaty Smell. Free from off odours

Intended use:

- Canned petfood
- Dry petfood

Nutritional profile:

Protein: 20-22%
Fat: 2-3%
Ash: 1-3%
Moisture: 72-75%



KANGAROO DENUDE TRIM

Outer silver skin, fat, and other coverings from meat of Kangaroo

Weight: 25kg variable
Size: 500mmx 500mm x 120mm
Type: Frozen Nude Block
Palletization: 4 layers x 9 high
Shelf-Life: 24 months from production date
Category: Category 3 material for Petfood manufacture

Colour: Dark Reddish Brown

Texture: Coarse ground meaty texture

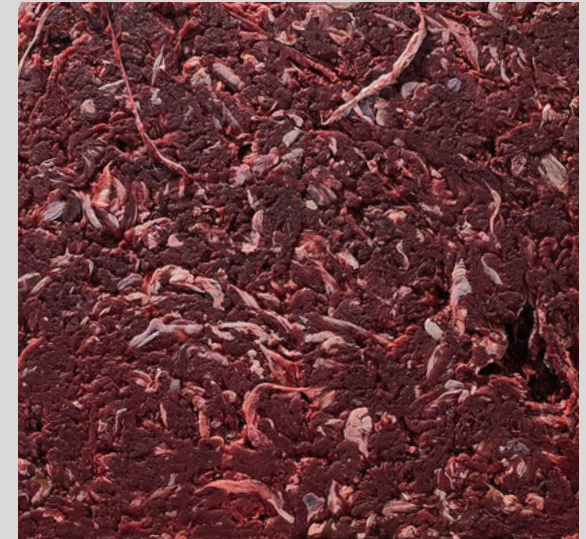
Odour: Meaty Smell. Free from off odours

Intended use:

- Canned petfood
- Dry petfood

Nutritional profile:

Protein: 18-20%
Fat: 3-5%
Ash: 1-3%
Moisture: 72-75%



KANGAROO BONE MASH

Bone and meat mash of Kangaroo

Weight: 25kg variable
Size: 500mmx 500mm x 120mm
Type: Frozen Nude Block
Palletization: 4 layers x 9 high
Shelf-Life: 24 months from production date
Category: Category 3 material for Petfood manufacture

Colour: Dark Reddish Brown

Texture: Coarse ground meaty texture

Odour: Meaty Smell. Free from off odours

Intended use:

- Canned petfood
- Dry petfood
- Bone broth

Nutritional profile:

Protein: 20-22%
Fat: Variable
Ash: 25-30%
Moisture: 50-60%



KANGAROO PLUCK

Collection of internal organs includes the heart, liver, lungs, kidneys connected by the esophagus

Weight: 25kg variable
Size: 500mmx 500mm x 120mm
Type: Frozen Nude Block
Palletization: 4 layers x 9 high
Shelf-Life: 24 months from production date
Category: Category 3 material for Petfood manufacture

Colour: Dark Reddish Brown

Texture: Coarse ground meaty texture

Odour: Meaty Smell. Free from off odours

Intended use:

- Canned petfood
- Dry petfood

Nutritional profile:

Protein: 18-20%

Fat: 8-10%

Ash: 3-5%

Moisture: 70-75%



KANGAROO LIVER

Liver of Kangaroo

Weight: 25kg variable
Size: 500mmx 500mm x 120mm
Type: Frozen Nude Block
Palletization: 4 layers x 9 high
Shelf-Life: 24 months from production date
Category: Category 3 material for Petfood manufacture

Colour: Dark Reddish Brown

Texture: Coarse ground meaty texture

Odour: Meaty Smell. Free from off odours

Intended use:

- Canned petfood
- Dry petfood
- Air-Dried pet treats

Nutritional profile:

Protein: 20-22%

Fat: 2-3%

Ash: 1-3%

Moisture: 70-75%



KANGAROO HEARTS

Hearts of Kangaroo

Weight:	25kg variable
Size:	500mmx 500mm x 120mm
Type:	Frozen Nude Block
Palletization:	4 layers x 9 high
Shelf-Life:	24 months from production date
Category:	Category 3 material for Petfood manufacture

Colour: Dark Reddish Brown

Texture: Coarse ground meaty texture

Odour: Meaty Smell. Free from off odours

Intended use:

- Canned petfood
- Dry petfood
- Pet treats

Nutritional profile:

Protein:	18-20%
Fat:	1-3%
Ash:	1-3%
Moisture:	75-80%



KANGAROO LUNGS

Lungs of Kangaroo

Weight: 25kg variable
Size: 500mmx 500mm x 120mm
Type: Frozen Nude Block
Palletization: 4 layers x 9 high
Shelf-Life: 24 months from production date
Category: Category 3 material for Petfood manufacture



Colour: Dark Reddish Brown

Texture: Coarse ground meaty texture

Odour: Meaty Smell. Free from off odours

Intended use:

- Canned petfood
- Dry petfood
- Pet treats

Nutritional profile:

Protein: 18-20%

Fat: 1-3%

Ash: 1-3%

Moisture: 75-80%





CONTACT US

P: +61 7 3202 3688

E: sales@gamemeatprocessing.com.au

